

## Contents

|   |    |
|---|----|
| Part 1, Background .....                  | 3  |
| Location of Stainforth .....              | 3  |
| Region .....                              | 3  |
| OS Map reference .....                    | 4  |
| Parish .....                              | 4  |
| Historical background.....                | 6  |
| Origins and development of plan .....     | 9  |
| Consultation initiatives.....             | 10 |
| Part 2, Action plan 2008 .....            | 11 |
| Project report .....                      | 11 |
| How the work was done .....               | 11 |
| Why certain issues remain undecided ..... | 11 |
| What has already been achieved.....       | 13 |
| What work is ongoing .....                | 13 |
| Other ideas .....                         | 14 |
| Distribution and funding .....            | 15 |
| Action plan .....                         | 15 |
| Short term .....                          | 15 |
| Medium term.....                          | 16 |
| Long term.....                            | 16 |
| Quotations from the feedback .....        | 17 |
| I like .....                              | 17 |
| I don't like .....                        | 17 |
| Could do better .....                     | 17 |
| Also .....                                | 18 |
| Part 3, Background data .....             | 19 |
| Population and housing .....              | 19 |
| Snapshot of 2007 .....                    | 19 |
| Historical population .....               | 20 |
| Questionnaire analysis.....               | 21 |
| Young people's questionnaire .....        | 33 |
| Part 4, Useful contacts.....              | 35 |
| Telephone directory .....                 | 35 |

### Abbreviations

The following abbreviations and alternative names are used throughout this report.

|                   |   |
|-------------------|---|
| CDC               | Craven District Council                 |
| Foss              | Stainforth Force                        |
| Knight Stainforth | Little Stainforth                       |
| NYCC              | North Yorkshire County Council          |
| NYY               | North Yorkshire Youth                   |
| OS                | Ordnance Survey                         |
| PC                | Parish Council                          |
| SCAG              | Stainforth Community Action Group       |
| Stainforth YHA    | Taitlands                               |
| VH                | Village Hall                            |
| YDNPA             | Yorkshire Dales National Park Authority |
| YHA               | Youth Hostel Association                |
| YWT               | Yorkshire Wildlife Trust                |

---

## Part I, Background

---

### Location of Stainforth

#### Region

Stainforth lies on the southern edge of the Yorkshire Dales National Park, in the south western corner of North Yorkshire. It is 2½ miles from Settle, 18 miles from Skipton, and 44 miles from Leeds. The railway station at Settle is on the Settle to Carlisle line and connects to Skipton and Leeds.

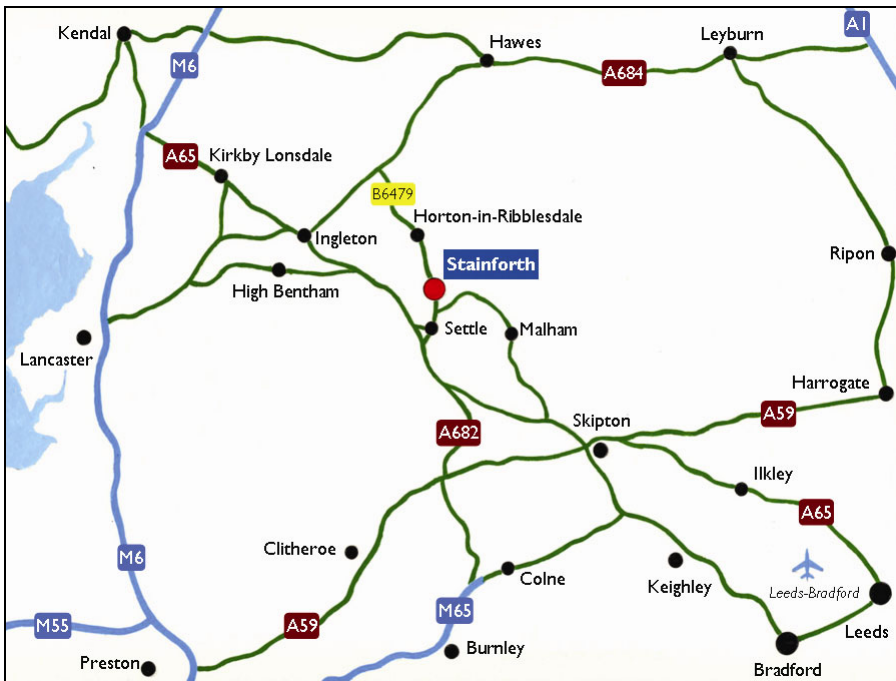


Figure 1, Stainforth in North Yorkshire

## OS Map reference

The centre of Stainforth can be found at OS map reference 822673. The surrounding area can be conveniently seen in a 1:25,000 scale map such as OS Explorer series, sheet OL2.

## Parish

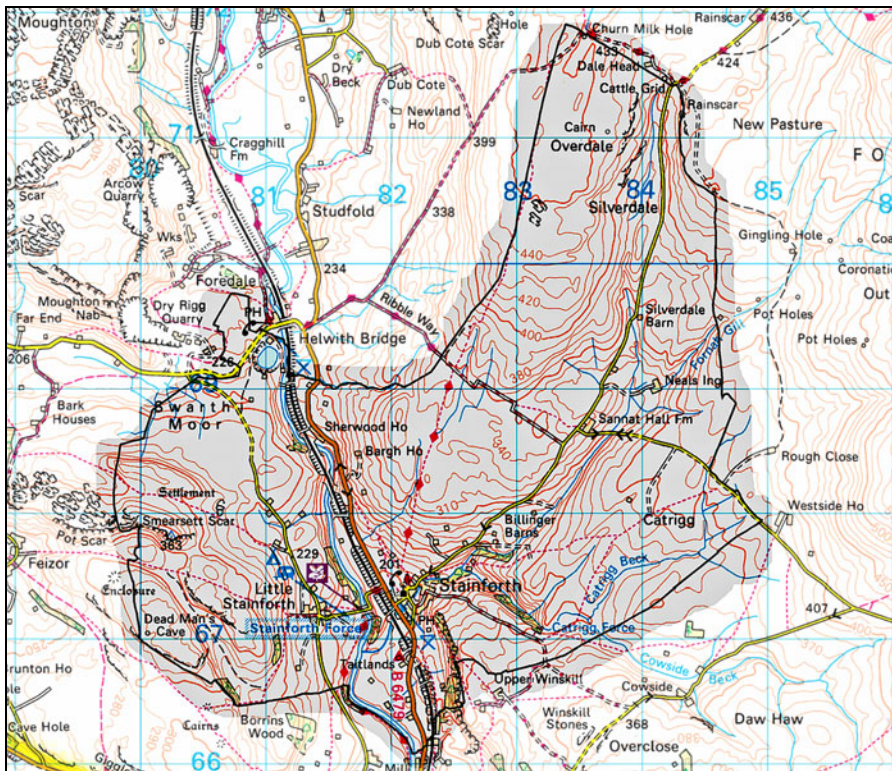


Figure 2, Parish boundary

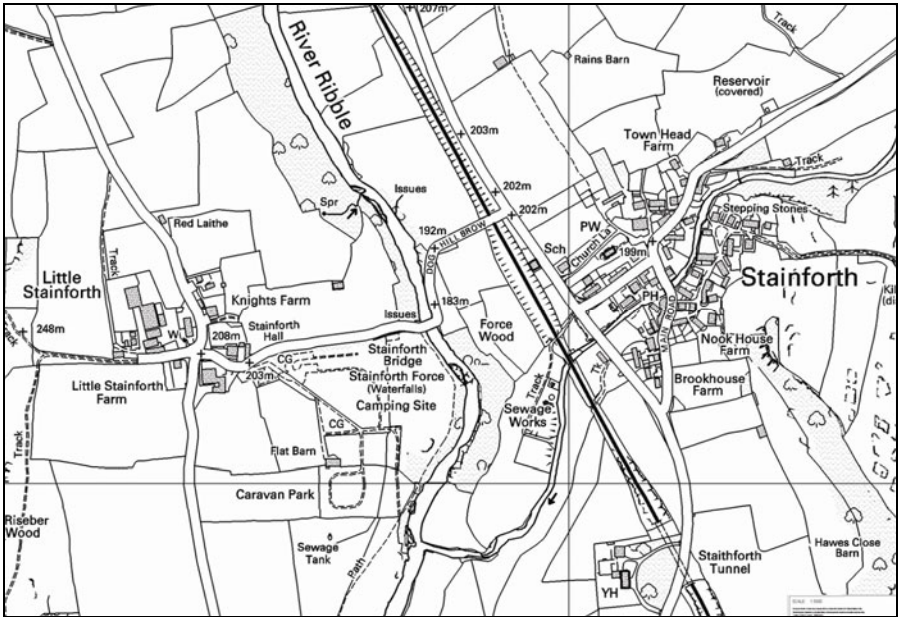


Figure 3, Stainforth and Little Stainforth



Figure 4, Road, rail and river, in the north of the parish

### Historical background

The Parish comprises two settlements split by the river Ribble: Knight Stainforth (also called Little Stainforth) to the West and Stainforth (Staynford Underbergh or Greater Stainforth as it was also known) to the East. Probably first settled in the Mesolithic and Neolithic periods Stainforth has seen the coming and departure of the Brigantine Celts, the Romans, the Angles, Saxons & Norse. Unfortunately there is little written evidence of their influence though the area is rich in archaeological artefacts and some place names still reflect the later settlers.

Knight Stainforth was held in the 13th and 14th centuries by the de Stainford family until the male line died out when it passed, by marriage, to the Tempest family. One member, Sir Richard was knighted (hence Knight Stainforth) after the battle of Wakefield in 1460. He died in 1488 and his descendants held Knight Stainforth until 1511 when again it passed by marriage to the Darcy family.

In the 13th century the principal landowners in (Greater) Stainforth were Hugh (or Hugo) son of Adam of Stainforth and Elias of Giggleswick. In a series of legal processes the land in Stainforth was gifted to Sawley Abbey and in 1270 Henry III granted Sawley free warren in Stainforth and elsewhere. Despite numerous gifts of land Sawley suffered a number of natural and man-made disasters. Chief amongst these was the founding of the rival Whalley Abbey which diverted trade from Sawley. From 1291 the weather began to adversely affect crops and animal husbandry and in 1314 there was a very poor summer followed by monsoon-like rains in 1315 and 1316. Regular attacks by Scottish raiders from 1314 to 1347, following the defeat of the English at Bannockburn by Robert the Bruce further reduced the ability of Stainforth and other Sawley possessions to support the Abbey and the local population. Matters improved after 1450 and revenues recovered.

Later Henry VIII's need for Crown revenues and his dispute with Rome resulted in the dissolution of the monasteries. This was unpopular and an anti-Government movement known as the

Pilgrimage of Grace spread across the North in 1536. Local rebels under the leadership of Robert Aske held a meeting at Dale Head in the parish. Nevertheless, the dissolutions were carried out and the possessions and plate of Sawley Abbey were sold to Sir Arthur Darcy uniting both Stainforths under one family. Over the next 50 years much of the estate was parcelled up and given, sold or leased on 500 year leases.

Formerly a township of Giggleswick parish, Stainforth became a parish in its own right with the consecration of St. Peter's Church in 1842. Except during the building of the Settle Carlisle Railway line, which opened in 1875, when its population was swelled by itinerant workers and their families, in recent times its population has remained around 200.



*Figure 5, Tradition at the Church Gate  
— after a wedding the children collect a toll from the bride and groom*

Throughout its history farming has provided the mainstay of local employment.



*Figure 6, Farming is still a major occupation*

A variety of other work has come and gone. Lime burning, quarrying, wool, cotton and flax weaving and dyeing, tanning and tallow production, corn mills (both wind and water) and cotton mills have at one time provided employment in Stainforth.

Blacksmiths and farriers, innkeepers, hauliers, paper makers, butchers and greengrocers have also lived and worked here. Today tourism plays an increasing role in the local economy with the caravan site, bunk barn and holiday cottages in the village. Improved transport and communications have also made work further afield possible whilst still living in Stainforth.

Over the last hundred years the village has like many others, suffered two world wars, foot and mouth outbreaks and a variety of changes not all for the better. In 1931 the packhorse bridge linking the two halves of the village was gifted by the Maudsley family to the Society for the Preservation of Ancient Monuments. A locally raised endowment of £250 pounds towards its upkeep was required before the Society accepted the gift. A village bypass was built in 1974 to remove traffic from the centre and prevent lorries grounding on the

bridge over Stainforth beck. July 1984 saw the closing of the School despite a valiant rearguard action by local families to retain it.

The Post Office and shop was run by the Handy family from 1937, first in Park View and then Brookhouse Farm. It was then run by the Priors at Riston House who took it to the Craven Heifer Pub when they became tenants. Here it featured in the visit by His Royal Highness, Prince Charles, in December 2001, as part of the 'Pub is the Hub' campaign to emphasize the role played by pubs in village life. The Post Office then moved to Bridge Cottage but subsequently closed when a new proprietor could not be found. The village pub carries on but the phrase 'use it or lose it' springs to mind. The Stainforth Youth Hostel, a victim with others of rationalisation, closed in 2007. The property has since been purchased by private individuals who plan to restore Taitlands, which is a listed building, to a whole house again.

### Origins and development of plan

|                  |  |
|------------------|--|
| 5 December 2006  | The Parish Council agreed to consider a 'village appraisal'  |
| 19 December 2006 | Angie Pedley, Chris Maudsley and Carol Newhouse (Parish Councillors) met with Rima Berry from YRCC to discuss a Parish Plan  |
| 9 January 2007   | Parish Council agreed that an application for funding be submitted to YRCC and a working group was set up of Angie, Chris and Carol                                |
| 25 April 2007    | Rosemary Caisley and Carole Beattie joined the Steering Group which then met 7 more times through May, June, July, August, Sept and October                        |
| February 2007    | Grant applied for and £2,987 received from with the proviso that the Parish (village?) donated 200 hours of voluntary time to the project (this has been achieved) |
| May 2007         | Initial flyer circulated 'things I love and hate about the village'  |
| 26 May 2007      | First public event drop-in coffee morning with display   |
| May 2007         | Disposable cameras given to families with children   |
| 1 July 2007      | Second public event drop-in evening at pub with display  |

## Stainforth Village Plan

---

|                  |   |
|------------------|---|
| August 2007      | Questionnaire distributed to all households in the Parish excluding holiday lets. Separate questionnaire included for young people under 18 years |
| September 2007   | Questionnaire results analysed. Adult return rate 81% (92 out of 114 distributed)   |
| September 2007   | 15 Young People Questionnaires returned   |
| 12 October 2007  | Third public event evening at Village Hall with Questionnaire results displayed and PowerPoint presentation                                       |
| 10 November 2007 | Fourth public event morning at Village Hall with Questionnaire results displayed and PowerPoint presentation                                      |
| December 2007    | Stainforth Community Action Group (SCAG) formed to take the Plan forward. Renamed the Village Plan to avoid confusion with the Parish Council.    |

### Consultation initiatives

|                         |  |
|-------------------------|--|
| Publicity               | Parish magazine frequently, Craven Herald local news frequently, reports to Parish Council every meeting, newsletters, door to door flyers and posters   |
| Spread of consultations | Village coffee mornings, village events such as the July 07 barbecue, pilot questionnaires completed by 18 individuals, display for Little Stainforth residents, 2 public events at Village Hall and Pub with results displayed at 2 more public events. |
| Additional meetings     | February – April 2008 meetings of Steering Group to produce Plan.  |

---

## Part 2, Action plan 2008

---

### Project report

#### How the work was done

The consultation process included several drafts of a questionnaire which were tested on eighteen people. Their comments were incorporated into the final questionnaire which was distributed to every household in August 2007. The return was exceptionally high (81%) and, as a result, the opinions of a large majority of people in the village have been documented.

Once the results were compiled, presentations were given and reactions collated. All the public events have been opportunities to add comments to the process.

The Steering Group looked at all the results. The issues which brought the biggest responses were:

- provision for young people and children
- environmental and energy-saving issues
- the need to improve the Village Hall facilities.

#### Why certain issues remain undecided

Some issues cannot be developed from the results of the questionnaire because the village was either split or undecided. In addition, not every issue can be acted upon by the Action Groups. Some have to be passed to other bodies, or initially to the Parish Council.

Some of the issues raised need more village consultation or information, for example about how to tackle traffic and speed problems. Car parking is an ongoing problem with no obvious solution.



*Figure 7, Traffic congestion: acceptable and otherwise*

Street lighting remains controversial and without consensus; this is left for the Parish Council to handle.

For example, here are some quotations from the questionnaire returns:

*'lights should not be left on all night'*

*'have the street lights on all night'*

*'on balance I would prefer less lighting'*

*'not enough lighting'*

Some issues do not need further action. For example, some publicity for Neighbourhood Watch has been achieved by the questionnaire, which showed that 89% of respondents already knew of the existing scheme. The phone mast issue is in abeyance for now but useful and specific opinions have been established. The proposal for road closure to traffic between the Foss and the B6479 is not mentioned in the Plan as there was no consensus. The loss of the Post Office and shop was frequently mentioned and there are some people who would like to start a community venture.

### **What has already been achieved**

Because of the impetus of the Village Plan consultations, a Youth Club has been set up using grant money from North Yorkshire Youth. There has been great enthusiasm for the project which meets every week in the Village Hall.



*Figure 8, Youth Club meeting*

A village Environmental Group has been formed and has several projects in hand. Members are enthusiastic about all kinds of activities from litter picking to hay meadow conservation, and from wildlife gardens to Parish walks.

### **What work is ongoing**

A Carers group has formed but has yet to become operational. The local GP surgery will be given a copy of the published Plan.

A Website group is beginning to form but with no actual plans as yet. A website could be used by local businesses and also as a means to publicise existing education classes in the wider locality.

A substantial number of people would like to see a children's playground somewhere in the village. This is a large project which needs to be taken up by enthusiasts.

The need for improvement of facilities at the Village Hall is being undertaken by the Village Hall committee. More social activities are scheduled and a network of helpers is becoming established.



*Figure 9, Activities at the Village Hall*

### **Other ideas**

Some issues arising from the questionnaire need people to come forward to progress them. The desire for a mains gas supply is one example of this where there is a demand expressed. The suggestion for a rail halt at Stainforth could be pursued by enthusiasts.

The interest in sharing internet shopping orders or sharing cars may increase over time. There are people willing to start these projects.

## Distribution and funding

The published Plan will be distributed to local Councils and interested groups, such as Craven Housing. The Plan is designed as a working guide and will change as time goes on. The most important part of this project is what happens in the future, and the development of the ideas generated is a crucial part of the exercise.

The grant from the Yorkshire Rural Community Council of £2,987 was given on condition that the village matched this with at least 200 hours of volunteer time costed at £1,250. More than 200 hours of voluntary time have been donated to this project.

## Action plan

👉 **Note:** Contact details for the authorities and groups mentioned are shown in: Part 4, Useful contacts.

## Short term

Results of the following actions are expected to take place within 6 months.

| Action             | Project   | Initial steps           | Groups involved                             |
|--------------------|---|-------------------------|---|
| Carers             | Create links, co-ordinate                                 | Form network of helpers | SCAG, Age Concern                           |
| Environment        | Conservation, environmental appraisal & awareness of area | Form group              | SCAG, YDNPA, YWT, Craven Conservation Group |
| Leisure Activities | Social events   | Form network of helpers | VH committee, SCAG                          |
| Website            | Setting up the village website                            | Form group              | Craven College, SCAG                        |

**Medium term**

Results of following actions are expected to take place between 12 months and 3 years.

| Action         | Project   | Initial steps   | Groups involved                    |
|----------------|---|---|------------------------------------|
| Health         | Continuation and improvement of Local services  | Lobby & liaise with GP surgery                          | PC, SCAG                           |
| Shop           | Internet ordering                               | Co-ordinate volunteers                                  | SCAG, volunteers                   |
| Sustainability | Alternative power, composting, recycling & more | Research & promote awareness                            | Environment Group SCAG, PC         |
| Village Hall   | Modernisation and development                   | Building survey, improve heat insulation, damp proofing | VH Committee, Villagers            |
| Youth          | Activities for children                         | Form group, Youth Club, Events                          | VH Committee, NYY Youth Club Group |

**Long term**

Results of the following actions are expected to take place within 3 or more years.

| Action                 | Project                                       | Initial steps                        | Groups involved                                   |
|------------------------|---|--------------------------------------|---|
| Children's playground  | Equipment play area                           | Form group                           | SCAG, Youth Group, PC                             |
| Education              | Local Classes                                 | Provide information for local people | Craven College, SCAG Website, NYCC                |
| Housing                | Sensitive development according to local need | Lobby local bodies                   | Housing Associations CDC, PC                      |
| Traffic parking, speed | No clear consensus                            | Research & lobby                     | NYCC, SCAG, PC, Environmental group               |
| Transport              | Buses, trains lifts                           | Lobby Research & Co-ordinate         | Friends Settle/ Carlisle SCAG, PC Train operators |

## Quotations from the feedback

Quotations received at various Village Plan events and from the questionnaire:

### I like

*'peace and quiet'*  
*'not twee, a working village'*  
*'birdsong'*  
*'mix of people'*  
*'beautiful location'*  
*'beautiful surroundings'*  
*'unspoilt features'*  
*'can see the stars at night'*  
*'views'*  
*'the beck and stepping stones'*  
*'quality of life'*

### I don't like

*'inconsiderate visitors'*  
*'no play facilities'*  
*'no playground'*  
*'visitors who don't use the car park'*  
*'speed of vehicles through the village'*  
*'urban invasion the Foss in summer'*  
*'overpriced car park'*  
*'litter'*  
*'noise of motorbikes'*  
*'poor drainage and blockages'*

### Could do better

*'20 mph for traffic through the village'*  
*'more use of the Village Hall for social and community events'*  
*'tidy up parts of the village that are a mess'*  
*'improved surface on access to Village Hall'*  
*'more events like the Barbecue'*  
*'improved car parking'*  
*'tree maintenance'*

*'speed limit on by-pass'*  
*'bench on the Green at Little Stainforth'*  
*'grit bins on Dog Hill'*  
*'free car parking for locals in National Park car park'*  
*'afternoon bus service'*  
*'re-position bus stop'*

### **Also**

*'I am very interested in environmental (green) issues'*  
*'Make visitors use the NP car park'*  
*'if the YDNP car park was sorted out perhaps people wouldn't park all over the village'*  
*'free parking in car park for residents'*  
*'B6479 should be 40mph as through Langcliffe'*  
*'traffic measures needed on B6479 through village'*  
*'Traffic travelling too fast generally through village'*  
*'traffic travelling too fast into the village'*  
*'speed limit of 20mph through village'*  
*'no speed bumps – too noisy – but calming zones might help'*  
*'Parking is bad along the Hollies road'*  
*'Fire engine would be unable to get up to the East Green should the occasion arise'*  
*'visitors parking on the road because they will not pay to park in the car park'*  
*'motor bike riding on Goats Scar Lane'*  
*'motor bike riding and traffic too fast on the Settle to Horton road'*  
*'illegal parking in the Foss area'*  
*'Slow signs – Little Stainforth'*  
*'more traditional social activities – gala, bonfire night, Halloween, Christmas party, Youth Club'*  
*'need a better/modern Village Hall'*  
*'we constantly pick up litter around the area of our house and bushes'*  
*'removal of litter from the grass verges.'*

---

## Part 3, Background data

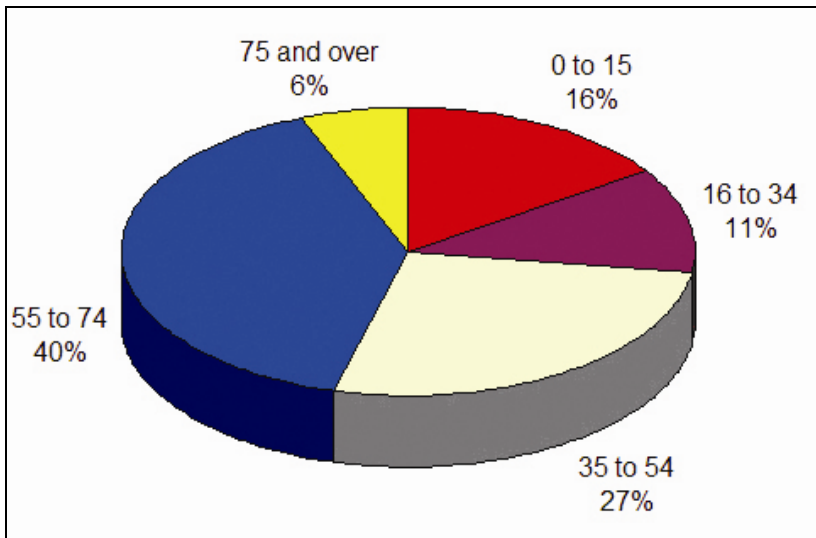
---

### Population and housing

#### Snapshot of 2007

Based on a survey of the Parish in 2007, the estimated population of Stainforth and Little Stainforth is 226 and the number of residential properties is 121. The estimated population does not include the holiday visitors of the Knight Stainforth Caravan Park which when full (usually any time between March and October) can amount to 450.

The proportion of age groups that make up the population are shown in *Figure 10, Age ranges in 2007*.



*Figure 10, Age ranges in 2007*

The different types of residential property are shown in *Figure 11, Residential properties, 2007*.

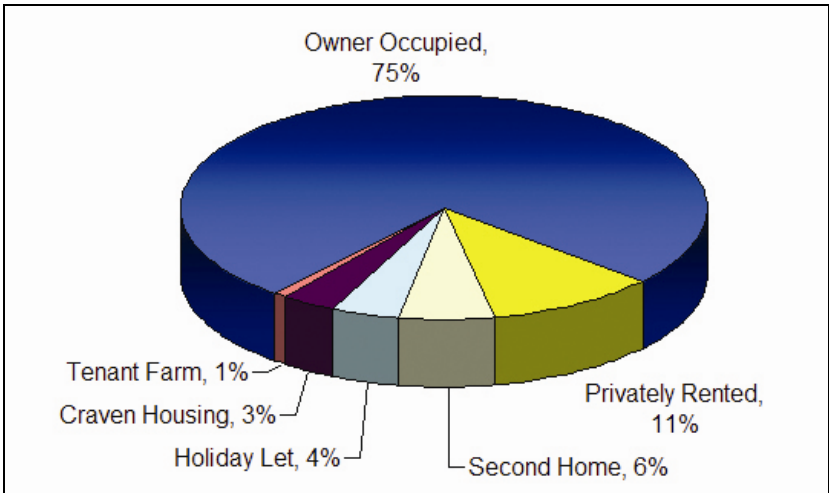


Figure 11, Residential properties, 2007

### Historical population

The following diagrams are based on national census figures and show how the population has changed over 200 years and how the proportion of ages has changed between 1991 and 2001.

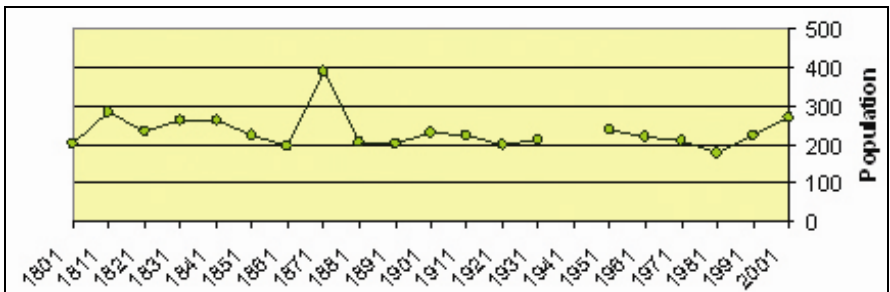


Figure 12, Population of Stainforth 1801-2001

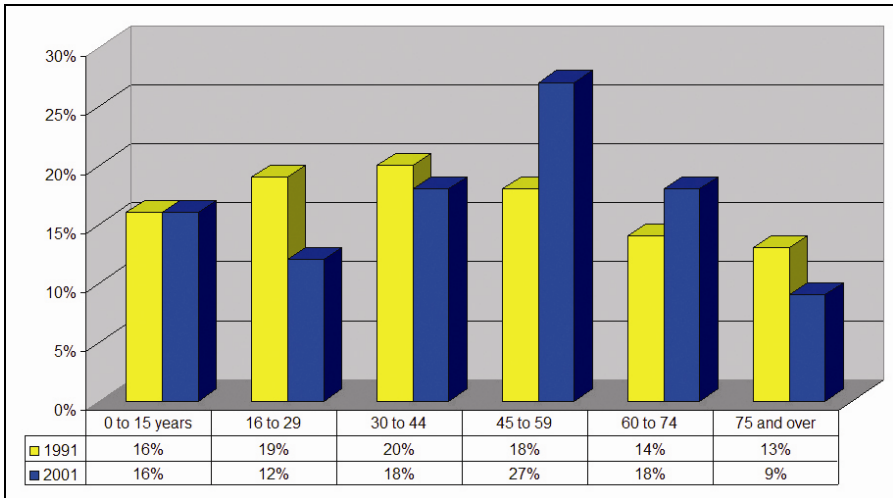


Figure 13, Age ranges, 1991 and 2001

### Questionnaire analysis

Answers to questions 1-49, prepared on Wednesday, 3 October 2007

Total number of responses analysed: 92  
 Number distributed: 114  
 Percentage returned: 81%

|           |             |    |         |
|-----------|-------------|----|---------|
| 1. Gender | Male        | 34 | (38.6%) |
|           | Female      | 54 | (61.4%) |
|           | no response | 4  |         |

|                                |             |    |         |
|--------------------------------|-------------|----|---------|
| 2. Which age group are you in? | 16-24       | 0  | (0.0%)  |
|                                | 25-44       | 20 | (22.7%) |
|                                | 45-64       | 41 | (46.6%) |
|                                | 65-84       | 23 | (26.1%) |
|                                | 85+         | 4  | (4.5%)  |
|                                | no response | 4  |         |

## Stainforth Village Plan

|  |              |            |  |
|--|--------------|------------|--|
| 3. How many people in your household including yourself are in the following age groups? | 0-4          | 7          |  |
|  | 5-9          | 7          |  |
|  | 10-15        | 12         |  |
|  | 16-19        | 8          |  |
|  | 20-34        | 11         |  |
|  | 35-54        | 44         |  |
|  | 55-74        | 65         |  |
|  | 75+          | 11         |  |
|  | <b>total</b> | <b>165</b> |  |
|  | no response  | 7          |  |

|   |                      |    |         |
|---|----------------------|----|---------|
| 4. How long have you lived in Stainforth / Little Stainforth? | less than 5 years    | 16 | (18.2%) |
|   | between 5 & 10 years | 20 | (22.7%) |
|   | 10 to 20 years       | 13 | (14.8%) |
|   | more than 20 years   | 39 | (44.3%) |
|   | no response          | 4  |         |

| Question 5   | Keyword                | Response | Percent |
|--|------------------------|----------|---------|
| 5. What do you value about living in this area?<br>85 Comments made or keywords assigned | access to countryside  | 2        | (2.4%)  |
|  | access to trains       | 1        | (1.2%)  |
|  | accessibility          | 1        | (1.2%)  |
|  | all ages               | 1        | (1.2%)  |
|  | always lived here      | 1        | (1.2%)  |
|  | beautiful              | 16       | (18.8%) |
|  | birds                  | 1        | (1.2%)  |
|  | born here              | 1        | (1.2%)  |
|  | built environment fits |          |         |
|  | business opportunity   | 1        | (1.2%)  |
|  | caves                  | 1        | (1.2%)  |
|  | clean air              | 1        | (1.2%)  |
|  | close to Settle        | 1        | (1.2%)  |
|  | close to work          | 4        | (4.7%)  |
|  | community feel         | 1        | (1.2%)  |
|  | countryside            | 7        | (8.2%)  |
|  | environment            | 13       | (15.3%) |
|  | everything             | 5        | (5.9%)  |
|  | family                 | 1        | (1.2%)  |
|  | family values          | 3        | (3.5%)  |
|  | farming community      | 1        | (1.2%)  |
|  | feeling of belonging   | 1        | (1.2%)  |
|  | fresh air              | 1        | (1.2%)  |
| friendly   | 4                      | (4.7%)   |         |
| friends  | 10                     | (11.8%)  |         |

## Part 3, Background data

| Question 5 | Keyword                       | Response | Percent |
|------------|-------------------------------|----------|---------|
|            | garage                        | 5        | (5.9%)  |
|            | good environment for children | 1        | (1.2%)  |
|            | good schools                  | 3        | (3.5%)  |
|            | great place to live           | 1        | (1.2%)  |
|            | healthy living                | 1        | (1.2%)  |
|            | heritage                      | 2        | (2.4%)  |
|            | home                          | 1        | (1.2%)  |
|            | home village                  | 1        | (1.2%)  |
|            | know most people              | 1        | (1.2%)  |
|            | landscape                     | 1        | (1.2%)  |
|            | like everything               | 4        | (4.7%)  |
|            | local get togethers           | 2        | (2.4%)  |
|            | location                      | 1        | (1.2%)  |
|            | love and respect it           | 3        | (3.5%)  |
|            | lovely surroundings           | 1        | (1.2%)  |
|            | low crime                     | 3        | (3.5%)  |
|            | low traffic                   | 2        | (2.4%)  |
|            | National Park                 | 1        | (1.2%)  |
|            | natural beauty                | 2        | (2.4%)  |
|            | neighbours                    | 2        | (2.4%)  |
|            | nice place to live            | 1        | (1.2%)  |
|            | no urban clutter              | 1        | (1.2%)  |
|            | not crowded                   | 1        | (1.2%)  |
|            | not many holiday properties   | 2        | (2.4%)  |
|            | opportunities                 | 1        | (1.2%)  |
|            | outdoor activities            | 1        | (1.2%)  |
|            | peace and quiet               | 1        | (1.2%)  |
|            | peaceful                      | 8        | (9.4%)  |
|            | people                        | 6        | (7.1%)  |
|            | personal safety               | 10       | (11.8%) |
|            | picturesque                   | 6        | (7.1%)  |
|            | place                         | 1        | (1.2%)  |
|            | pretty                        | 1        | (1.2%)  |
|            | pub                           | 1        | (1.2%)  |
|            | quality of life               | 2        | (2.4%)  |
|            | quiet life                    | 4        | (4.7%)  |
|            | quiet location                | 2        | (2.4%)  |
|            | relaxed                       | 3        | (3.5%)  |
|            | River Ribble                  | 1        | (1.2%)  |
|            | rural activities              | 1        | (1.2%)  |
|            | rural setting                 | 1        | (1.2%)  |
|            | scenery                       | 2        | (2.4%)  |

## Stainforth Village Plan

| Question 5 | Keyword           | Response   | Percent       |
|------------|-------------------|------------|---------------|
|            | semi-rural living | 16         | (18.8%)       |
|            | small community   | 1          | (1.2%)        |
|            | space             | 1          | (1.2%)        |
|            | surroundings      | 2          | (2.4%)        |
|            | the church        | 1          | (1.2%)        |
|            | tradition         | 1          | (1.2%)        |
|            | tranquillity      | 1          | (1.2%)        |
|            | trees             | 16         | (18.8%)       |
|            | views             | 1          | (1.2%)        |
|            | village community | 4          | (4.7%)        |
|            | visitors          | 6          | (7.1%)        |
|            | walking           | 1          | (1.2%)        |
|            | walks             | 5          | (5.9%)        |
|            | well-maintained   | 1          | (1.2%)        |
|            | working village   | 1          | (1.2%)        |
|            | <b>total</b>      | <b>1</b>   | <b>(1.2%)</b> |
|            |                   | <b>233</b> |               |

|  |             |    |         |
|--|-------------|----|---------|
| 6. Do you or any of your household require alternative accommodation now or in the next 2-5 years? | Yes         | 20 | (22.2%) |
|  | No          | 70 | (77.8%) |
|  | no response | 2  |         |

|   |                                    |           |         |
|---|------------------------------------|-----------|---------|
| 7. What are the main reasons for needing alternative accommodation? | Retirement / getting older         | 9         | (39.1%) |
|   | Change of job                      | 0         | (0.0%)  |
|   | To be nearer family/ friends       | 1         | (4.3%)  |
|   | Change in household size           | 4         | (17.4%) |
|   | Young adult leaving home           | 5         | (21.7%) |
|   | Reduce housing costs               | 3         | (13.0%) |
|   | To be nearer facilities or schools | 1         | (4.3%)  |
|   | Better quality housing             | 0         | (0.0%)  |
|   | Other                              | 6         | (26.1%) |
|   | <b>total</b>                       | <b>29</b> |         |
| no response   | 69                                 |           |         |

## Part 3, Background data

|  |                                  |    |         |
|--|----------------------------------|----|---------|
| 8. What sort of alternative accommodation will you need? | House                            | 11 | (50.0%) |
|  | Bungalow                         | 10 | (45.5%) |
|  | Flat                             | 2  | (9.1%)  |
|  | Maisonette                       | 0  | (0.0%)  |
|  | Bed-sit                          | 0  | (0.0%)  |
|  | Supported housing                | 3  | (13.6%) |
|  | Sheltered housing                | 3  | (13.6%) |
|  | Housing adapted for disabilities | 2  | (9.1%)  |
|  | Residential/nursing home         | 0  | (0.0%)  |
|  | Other                            | 0  | (0.0%)  |
| <b>total</b>   | <b>31</b>                        |    |         |
| no response  | 70                               |    |         |

|  |                              |            |         |
|--|------------------------------|------------|---------|
| 9. What type of new build housing would you prefer to see in the Parish? | Low cost /affordable rental  | 21         | (23.6%) |
|  | Low cost / affordable to buy | 39         | (43.8%) |
|  | Sheltered accommodation      | 7          | (7.9%)  |
|  | Bungalows                    | 8          | (9.1%)  |
|  | Detached houses              | 6          | (6.8%)  |
|  | On the edges of the Parish   | 13         | (14.8%) |
|  | In fill                      | 11         | (12.4%) |
|  | None at all                  | 37         | (42.0%) |
|  | Other                        | 3          | (3.4%)  |
|  | <b>total</b>                 | <b>145</b> |         |
| no response  | 3                            |            |         |

|   |                            |            |         |
|---|----------------------------|------------|---------|
| 10. If you were going to take a course, what sort of education and training would you like to do? | Computers & I.T.           | 32         | (37.2%) |
|   | Exercise / Sport / Dancing | 30         | (34.9%) |
|   | Languages                  | 25         | (29.1%) |
|   | Local History / Studies    | 22         | (25.9%) |
|   | Photography                | 6          | (7.1%)  |
|   | Art                        | 26         | (30.6%) |
|   | Other (please say what)    | 8          | (9.3%)  |
|   | None                       | 22         | (25.9%) |
|   | <b>total</b>               | <b>171</b> |         |
|   | no response                | 6          |         |

## Stainforth Village Plan

---

|  |  |                  |         |
|--|--|------------------|---------|
| 11. Which of the following would most help you to undertake an education or training course? | More money                                 | 10               | (15.4%) |
|  | Cheaper courses                            | 18               | (27.7%) |
|  | Support with child care                    | 5                | (7.7%)  |
|  | Support caring for elderly/<br>sick person | 0                | (0.0%)  |
|  | More information                           | 9                | (14.1%) |
|  | Better transport                           | 7                | (10.9%) |
|  | Locally-based courses                      | 52               | (80.0%) |
|  | Other                                      | 7                | (10.9%) |
|  | <b>total</b><br>no response                | <b>108</b><br>27 |         |

|   |             |    |         |
|---|-------------|----|---------|
| 12. Do you have access to the Internet? | Yes         | 66 | (71.7%) |
|   | No          | 26 | (28.3%) |
|   | no response | 0  |         |

|   |             |    |         |
|---|-------------|----|---------|
| 13. Would you use a Stainforth website? | Yes         | 47 | (55.3%) |
|   | No          | 38 | (44.7%) |
|   | no response | 7  |         |

|                                   |             |    |         |
|-----------------------------------|-------------|----|---------|
| 14. Do you run your own business? | Yes         | 24 | (26.4%) |
|                                   | No          | 67 | (73.6%) |
|                                   | no response | 1  |         |

|                            |             |    |         |
|----------------------------|-------------|----|---------|
| 15. Do you work from home? | Yes         | 26 | (28.6%) |
|                            | No          | 65 | (71.4%) |
|                            | no response | 1  |         |

|  |             |    |  |
|--|-------------|----|--|
| 16. Are you interested in environmental & wildlife issues? | Yes         | 91 |  |
|  | No          | 1  |  |
|  | no response | 0  |  |

|  |                             |                  |         |
|--|-----------------------------|------------------|---------|
| 17. Would you be willing / able to help with any of the following? | Clearing up litter          | 32               | (50.0%) |
|  | Planting trees              | 26               | (40.0%) |
|  | Planting bulbs              | 26               | (40.6%) |
|  | Grass cutting               | 21               | (32.3%) |
|  | Sponsorship of projects     | 12               | (18.8%) |
|  | Other                       | 10               | (15.6%) |
|  | <b>total</b><br>no response | <b>127</b><br>28 |         |

## Part 3, Background data

|   |                  |    |         |
|---|------------------|----|---------|
| 18. How important are energy saving / sustainability issues to you? | Very important   | 52 | (57.8%) |
|   | Fairly important | 36 | (40.0%) |
|   | Not important    | 2  | (2.2%)  |
|   | no response      | 2  |         |

|   |                                     |            |         |
|---|-------------------------------------|------------|---------|
| 19. Which of the following would most improve the quality of life in this area? | Welcome signs                       | 11         | (12.6%) |
|   | Speed limits within the village     | 30         | (34.1%) |
|   | Free car parking in the NP car park | 62         | (70.5%) |
|   | More seats / benches                | 26         | (29.5%) |
|   | A bus shelter                       | 19         | (21.8%) |
|   | More help for elderly people        | 24         | (27.3%) |
|   | More community activities           | 33         | (37.5%) |
|   | Activities for young people         | 54         | (61.4%) |
|   | Mains gas supply                    | 35         | (39.8%) |
|   | <b>total</b>                        | <b>294</b> |         |
| no response   | 5                                   |            |         |

|  |             |    |         |
|--|-------------|----|---------|
| 20. Are you able to help with organising any community activities? | Yes         | 26 | (30.6%) |
|  | No          | 59 | (69.4%) |
|  | no response | 7  |         |

|  |                             |            |         |
|--|-----------------------------|------------|---------|
| 21. Are any of the following a problem in your area? | Heavy traffic               | 10         | (14.1%) |
|  | Traffic noise               | 16         | (22.2%) |
|  | Nowhere to park             | 27         | (37.5%) |
|  | Illegal parking             | 27         | (38.0%) |
|  | Traffic travelling too fast | 40         | (55.6%) |
|  | Motor bike riding           | 33         | (45.8%) |
|  | Other                       | 11         | (15.3%) |
|  | <b>total</b>                | <b>164</b> |         |
|  | no response                 | 21         |         |

|  |                     |    |         |
|--|---------------------|----|---------|
| 22. Are you happy with the street lighting in the village? | Yes                 | 53 | (58.9%) |
|  | No                  | 10 | (11.1%) |
|  | Some changes needed | 27 | (30.0%) |
|  | no response         | 2  |         |

|  |             |    |         |
|--|-------------|----|---------|
| 23. Would you like to see measures to reduce the speed of traffic passing through this area (e.g. speed bumps, traffic calming zones)? | Yes         | 36 | (40.4%) |
|  | No          | 53 | (59.6%) |
|  | no response | 3  |         |

## Stainforth Village Plan

|  |                       |    |         |
|--|-----------------------|----|---------|
| 24. Would you support closing the roads to Stainforth Foss to motorised traffic? (on either side - Dog Hill to by the caravan site entrance) | Yes                   | 29 | (32.2%) |
|  | Yes at weekends       | 9  | (10.0%) |
|  | No                    | 33 | (36.7%) |
|  | Need more information | 19 | (21.1%) |
|  | no response           | 2  |         |

|  |                |    |         |
|--|----------------|----|---------|
| 25. How many passenger vehicles (cars, vans, motorcycles, mopeds) are owned by people in your household? | None           | 6  | (6.6%)  |
|  | 1              | 43 | (47.3%) |
|  | 2              | 29 | (31.9%) |
|  | 3              | 8  | (8.8%)  |
|  | 4              | 2  | (2.2%)  |
|  | more than this | 3  | (3.3%)  |
|  | no response    | 1  |         |

|  |  |    |         |
|--|--|----|---------|
| 26. Where do you usually park your car at night? | On the street outside my home            | 23 | (27.1%) |
|  | On the street some distance from my home | 4  | (4.7%)  |
|  | In a garage                              | 13 | (15.3%) |
|  | On my drive / property                   | 56 | (65.1%) |
|  | Other                                    | 2  | (2.3%)  |
|  | <b>total</b>                             | 98 |         |
| no response                                      | 7  |    |         |

|   |             |    |         |
|---|-------------|----|---------|
| 27. Do you have any problems with parking your own vehicle? | Yes         | 12 | (13.8%) |
|   | No          | 75 | (86.2%) |
|   | no response | 5  |         |

|  |             |    |         |
|--|-------------|----|---------|
| 28. Is additional parking needed in the village? | Yes         | 41 | (49.4%) |
|  | No          | 42 | (50.6%) |
|  | no response | 9  |         |

|   |                               |            |         |
|---|-------------------------------|------------|---------|
| 29. Where do you usually do your food shopping? | At local shops                | 61         | (67.0%) |
|   | At a local supermarket        | 84         | (92.3%) |
|   | In an out of town supermarket | 35         | (38.9%) |
|   | On the Internet               | 11         | (12.1%) |
|   | Other                         | 2          | (2.2%)  |
|   | <b>total</b>                  | <b>193</b> |         |
|   | no response                   | 1          |         |

|   |             |    |         |
|---|-------------|----|---------|
| 30. Would you be interested in sharing a shopping order from the Internet (e.g. from Tesco, Sainsbury's?) | Yes         | 11 | (12.1%) |
|   | No          | 80 | (87.9%) |
|   | no response | 1  |         |

## Part 3, Background data

|  |                                  |           |         |
|--|----------------------------------|-----------|---------|
| 31. Would you be interested in giving lifts to people in the village?                              | Yes                              | 47        | (55.3%) |
|  | No                               | 38        | (44.7%) |
|  | no response                      | 7         |         |
|  | <b>total</b>                     | <b>90</b> |         |
| 32. Would you be interested in a car-sharing scheme?   | Yes                              | 8         | (9.1%)  |
|  | No                               | 61        | (69.3%) |
|  | Need more information            | 21        | (24.1%) |
|  | <b>total</b>                     | <b>90</b> |         |
| 33. Do you use the current bus service?  | Daily                            | 1         | (1.1%)  |
|  | Weekly                           | 5         | (5.5%)  |
|  | Occasionally                     | 25        | (27.5%) |
|  | Never                            | 60        | (65.9%) |
|  | no response                      | 1         |         |
| 34. On average how many times a week do you use local taxi services (Stainforth, Settle, Skipton)? | Once a day                       | 0         | (0.0%)  |
|  | 1-2 times a week                 | 2         | (2.2%)  |
|  | Less than once a week            | 5         | (5.6%)  |
|  | Occasionally                     | 28        | (31.1%) |
|  | Almost never / never             | 55        | (61.1%) |
|  | no response                      | 2         |         |
| 35. Would you support & use a railway halt near the village if it could be put in place?           | Yes                              | 65        | (74.7%) |
|  | No                               | 22        | (25.3%) |
|  | no response                      | 5         |         |
| 36. Do you support the siting of a mobile phone mast in the area?                                  | Yes, in the village              | 14        | (15.6%) |
|  | Yes, away from residential areas | 46        | (51.1%) |
|  | No                               | 30        | (33.3%) |
|  | no response                      | 2         |         |

## Stainforth Village Plan

---

|  |                       |            |         |
|--|-----------------------|------------|---------|
| 37. In general, where do your children play? | At home               | 27         | (32.5%) |
|  | At friends' houses    | 17         | (20.5%) |
|  | In the street         | 10         | (12.0%) |
|  | In a local playground | 6          | (7.2%)  |
|  | Elsewhere             | 4          | (4.8%)  |
|  | Don't know            | 0          | (0.0%)  |
|  | Not applicable        | 55         | (66.3%) |
|  | <b>total</b>          | <b>119</b> |         |
| no response                                  | 9                     |            |         |

|   |                              |            |         |
|---|------------------------------|------------|---------|
| 38. What new facilities, activities or services would you or your household use in the village? | Children's playground        | 31         | (47.0%) |
|   | Indoor sports facilities     | 30         | (45.5%) |
|   | Outdoor sports facilities    | 25         | (37.9%) |
|   | I.T. Facilities              | 13         | (19.7%) |
|   | Gardening / flower arranging | 24         | (36.4%) |
|   | Music                        | 20         | (30.3%) |
|   | Crafts                       | 18         | (27.3%) |
|   | Other                        | 13         | (19.7%) |
|   | <b>total</b>                 | <b>174</b> |         |
| no response   | 26                           |            |         |

|   |             |    |         |
|---|-------------|----|---------|
| 39. Many people say they want a shop and/or Post Office in the village. Would you be willing / able to help to run one? | Yes         | 19 | (21.6%) |
|   | No          | 69 | (78.4%) |
|   | no response | 4  |         |

|  |                                      |            |         |
|--|--------------------------------------|------------|---------|
| 40. Which of the following improvements would you like to see at the Village Hall? | More social activities for adults    | 35         | (43.8%) |
|  | More activities for children & youth | 54         | (67.5%) |
|  | Extra / improved heating             | 23         | (29.1%) |
|  | Improved toilet facilities           | 23         | (29.1%) |
|  | Improved access                      | 22         | (27.8%) |
|  | Car parking                          | 23         | (29.1%) |
|  | Something else (please describe)     | 9          | (11.4%) |
|  | None needed                          | 6          | (7.5%)  |
|  | <b>total</b>                         | <b>195</b> |         |
| no response  | 12                                   |            |         |

## Part 3, Background data

|   |                |            |         |
|---|----------------|------------|---------|
| 41. Do you use facilities in nearby villages such as Horton & Langcliffe? | Horton         | 20         | (29.9%) |
|   | Langcliffe     | 40         | (59.7%) |
|   | Helwith Bridge | 13         | (19.7%) |
|   | Austwick       | 14         | (21.2%) |
|   | Other          | 18         | 26.9%)  |
|   | <b>total</b>   | <b>105</b> |         |
|   | no response    | 25         |         |

|  |             |    |         |
|--|-------------|----|---------|
| 42. How would you describe the service offered by the Police in this area? | Good        | 12 | (13.3%) |
|  | OK          | 29 | (32.2%) |
|  | Poor        | 18 | (20.0%) |
|  | Don't know  | 31 | (34.4%) |
|  | no response | 2  |         |

|   |             |    |         |
|---|-------------|----|---------|
| 43. Are you aware of the Neighbourhood Watch Scheme in this area? | Yes         | 82 | (89.1%) |
|   | No          | 10 | (10.9%) |
|   | no response | 0  |         |

|  |                      |            |         |
|--|----------------------|------------|---------|
| 44. Have you used, or visited anyone using, any of the following services in the last 2 years? | Home carers          | 24         | (32.4%) |
|  | Meals on wheels      | 8          | (10.8%) |
|  | Respite care         | 14         | (18.9%) |
|  | Day centre           | 8          | (10.8%) |
|  | Occupational therapy | 11         | (14.9%) |
|  | Physiotherapy        | 30         | (40.5%) |
|  | District Nurses      | 26         | (35.1%) |
|  | Castleberg hospital  | 28         | (37.8%) |
|  | Skipton hospital     | 36         | (48.6%) |
|  | Airedale hospital    | 63         | (85.1%) |
|  | <b>total</b>         | <b>248</b> |         |
|  | no response          | 18         |         |

|   |             |    |         |
|---|-------------|----|---------|
| 45. Do you have a long-term illness or disability that places limitations upon your daily life? | Yes         | 13 | (14.9%) |
|   | No          | 74 | (85.1%) |
|   | no response | 5  |         |

|  |             |    |         |
|--|-------------|----|---------|
| 46. Are you caring for an elderly or long-term sick or disabled person on a regular basis? | Yes         | 8  | (9.1%)  |
|  | No          | 80 | (90.9%) |
|  | no response | 4  |         |

|   |             |    |         |
|---|-------------|----|---------|
| 47. Would you be interested in joining a support group for Carers & people with disabilities/mobility difficulties? | Yes         | 10 | (12.0%) |
|   | No          | 73 | (88.0%) |
|   | no response | 9  |         |

## Stainforth Village Plan

|  |                |            |         |
|--|----------------|------------|---------|
| 48. How would you like to receive feedback on the findings of this survey? | Public meeting | 20         | (23.3%) |
|  | Newsletter     | 74         | (85.1%) |
|  | E-mail         | 20         | (23.3%) |
|  | Newspaper      | 4          | (4.7%)  |
|  | Personal visit | 1          | (1.1%)  |
|  | Other          | 0          | (0.0%)  |
|  | <b>total</b>   | <b>119</b> |         |
| no response  | 6              |            |         |

| Question 49  | Keyword                           | Response | Percent |
|--|-----------------------------------|----------|---------|
| 49. Do you have any other comments to make about issues raised in this survey?<br>40 comments made or keywords assigned. | 40 mph speed limit                | 1        | (2.5%)  |
|  | access to facilities and services | 1        | (2.5%)  |
|  | action not talk                   | 1        | (2.5%)  |
|  | activities outside work hours     | 1        | (2.5%)  |
|  | anonymity                         | 1        | (2.5%)  |
|  | elderly support                   | 1        | (2.5%)  |
|  | environmental issues              | 1        | (2.5%)  |
|  | good luck                         | 1        | (2.5%)  |
|  | good village spirit               | 1        | (2.5%)  |
|  | internet shopping                 | 1        | (2.5%)  |
|  | live alone                        | 1        | (2.5%)  |
|  | long winded                       | 1        | (2.5%)  |
|  | make attractive for tourists      | 1        | (2.5%)  |
|  | nice place to live and work       | 1        | (2.5%)  |
|  | no mobile masts                   | 1        | (2.5%)  |
|  | no new houses in gardens          | 1        | (2.5%)  |
|  | off-road parking                  | 1        | (2.5%)  |
|  | Parish Council                    | 2        | (5.0%)  |
|  | parking policy - National Park    | 3        | (7.5%)  |
|  | playground                        | 2        | (5.0%)  |
|  | poor survey                       | 1        | (2.5%)  |
|  | public transport                  | 1        | (2.5%)  |
|  | rail stop                         | 1        | (2.5%)  |
|  | recycling                         | 1        | (2.5%)  |
|  | refurbish toilets                 | 1        | (2.5%)  |
|  | remove trees                      | 1        | (2.5%)  |
|  | residents parking                 | 2        | (5.0%)  |
|  | scruffy areas                     | 1        | (2.5%)  |
|  | shame if village split            | 4        | (10.0%) |
|  | speeding quarry lorries           | 1        | (2.5%)  |
| the Church   | 2                                 | (5.0%)   |         |
| turn church into village hall  | 1                                 | (2.5%)   |         |

| Question 49 | Keyword                | Response  | Percent |
|-------------|------------------------|-----------|---------|
|             | weekend residents only | 1         | (2.5%)  |
|             | wider community        | 1         | (2.5%)  |
|             | wish you well          | 1         | (2.5%)  |
|             | work to beck           | 1         | (2.5%)  |
|             | work together          | 1         | (2.5%)  |
|             | <b>total</b>           | <b>46</b> |         |
|             | no keyword assigned    | 7         |         |

### Young people's questionnaire

Total number of responses: 15

Age groups:

|                   |    |
|-------------------|----|
| 0-4               | 1  |
| 5-8               | 3  |
| 8-12              | 8  |
| 13-17             | 4  |
| Total represented | 16 |

Please tell us what would improve life in Stainforth for you. Please list 5 things you would like.

| Ref | Feature  | Reply |
|-----|--|-------|
| 1.  | A park/play area   | 11    |
| 2.  | A village shop/post office/newsagents                          | 10    |
| 3.  | Sports facilities eg tennis courts, netball court              | 2     |
| 4.  | A youth club   | 4     |
| 5.  | Conservation area  | 1     |
| 6.  | Bonfire night  | 1     |
| 7.  | Christmas tree   | 1     |
| 8.  | Games room/indoor play area                                    | 2     |
| 9.  | Somewhere flat to play football & stuff                        | 3     |
| 10. | More activities for children/young people eg: disco, workshops | 4     |
| 11. | Steps down from Ladies' Walk to the river                      | 1     |
| 12. | Don't allow people to park blocking access around the Green    | 1     |
| 13. | Traffic calming/safe roads                                     | 2     |
| 14. | A train station  | 1     |
| 15. | A pool/snooker table   | 2     |
| 16. | A nicer Village Hall, more modern                              | 2     |

## Stainforth Village Plan

---

| Ref | Feature   | Reply |
|-----|---|-------|
| 17. | More community activities eg: village fete, something along similar lines to the Barbecue | 2     |
| 18. | Speed restrictions on main road past village  | 1     |
| 19. | Prohibiting vehicles down Dog Hill to the Foss  | 1     |
| 20. | Better control of visitors to the Foss (litter, rowdy groups etc.)                        | 1     |
| 21. | Parent & baby/child group   | 1     |
| 22. | More bridleways – for me & my pony to ride on   | 1     |
| 23. | Nothing else really, I love Stainforth the way it is                                      | 1     |
| 24. | Mountain bike trail/somewhere to ride my bike   | 2     |
| 25. | Other clubs, e. g. scouts, art, drama etc.  | 1     |
| 26. | Something about dinosaurs   | 1     |
| 27. | Seasonal events — Christmas, Easter etc.  | 1     |
| 28. | Things to keep young people occupied  | 1     |

---

## Part 4, Useful contacts

---

For further information about the Village Plan, contact:

Chris Maudsley, Knight Stainforth Hall, Little Stainforth BD24 0DP  
Tel: 822200

Angie Pedley, 5 Hollies Cottages, Stainforth BD24 9PQ Tel: 825836

### Telephone directory

| To call Stainforth numbers from outside the area, first dial 01729 |              |
|--|--------------|
| Age Concern, Settle  | 823066       |
| Carers' Group, Christine Wilyman                                   | 823415       |
| Craven District Council  | 01756 700600 |
| Craven Heifer, Stainforth  | 822599       |
| Craven Housing   | 01756 704500 |
| Doctors' Surgery, Settle   | 822611       |
| Environmental Group,<br>Sue Dawson                                 | 823187       |
| John Manning   | 822547       |
| Garage, Stainforth   | 822233       |
| History Group, Bryan & Carol Beattie                               | 823497       |
| Hospitals,<br>Airedale   | 01535 652511 |
| Skipton  | 01756 792233 |
| Knight Stainforth Caravan Site                                     | 822200       |
| Lunch Club/Coffee Morning, Margaret Chapman                        | 823900       |
| Neighbourhood Watch, Bryan Beattie                                 | 823497       |
| North Yorkshire County Council                                     | 01609 780780 |
| Parish Council,<br>Chair, Chris Maudsley                           | 822200       |
| Clerk, Peter Leng  | 825532       |
| Parish Newsletter Editor, Derek Hewitson                           | 824471       |
| Police<br>Non-emergency  | 0845 6060247 |
| safercraven@northyorkshirepolice.pnn.police.uk                     | e-mail       |
| Primary Care Trust   | 01423 815150 |

## Stainforth Village Plan

---

| To call Stainforth numbers from outside the area, first dial 01729 |               |
|--|---------------|
| Schools:   |               |
| Horton Primary School  | 860282        |
| Settle College   | 822451        |
| Settle Middle School   | 823636        |
| Settle Primary School  | 822019        |
| Settle & District Community News (advertising)                     | 015242 251868 |
| Settle Aid in Sickness Fund  | 825438        |
| Stainforth Community Action Group (SCAG)                           |               |
| Chair, Angie Pedley  | 825836        |
| Secretary, Carol Beattie   | 823497        |
| Swimming Pool, Settle  | 823626        |
| Tourist Information, Settle  | 825192        |
| Vicar, Roger Wood  | 823010        |
| Village Hall Committee   |               |
| Bookings, Margaret Chapman   | 823900        |
| Chair, Christine Wilyman   | 823415        |
| Secretary, Sue Dawson  | 823187        |
| Website Group, Angie Pedley  | 825836        |
| Yorkshire Dales National Park                                      |               |
| Office   | 0870 1666333  |
| Ranger   | 825242        |
| Youth Club Group,  |               |
| Chair, Carol Newhouse  | 824228        |
| Secretary, Carol Smith   | 824164        |

👉 **Note:** Details correct in June 2008.